



THE **RODNEY** GROUP

# INDUSTRIAL & COMMERCIAL DESIGN & BUDGET GUIDE

A GUIDE TO DESIGNING  
THE RIGHT BUILDING FOR YOU





## Welcome to our Industrial & Commercial Design Guide.

In this document you'll discover the services, parameters and products we can offer, the range of styles and specifications available to you, and get an idea of overall costs for your new building.

### CONTENTS:

#### 01 **SHELL**

Main structure

#### 02 **FIT OUT**

Internal Specifications

#### 03 **BUDGET RANGE**

Price Range Guide





01

---

# SHELL

---

The main structure of your building.

Let us help design a structure that suits your needs, and budget.

# 01 SHELL STYLE & DIMENSIONS

The first step in your commercial or industrial construction project is to establish the functionality of your development and develop a site plan, crucial for the building's design and functionality. Boundary setbacks must be taken into account due to fire safety regulations, ensuring compliance with local codes and safety for occupants and neighboring properties. We will guide you through these regulations, maximising safety and space.

Access and functionality drive the overall design. Proper planning of entry and exit points, loading docks, and parking areas is vital for operational efficiency. Whether you need open spaces or partitioned areas, our designs are flexible and adaptable to suit your requirements.

We offer a range of customisable features to ensure your building meets all regulatory requirements, fulfills operational needs, and reflects your business style.

## BUILDING PARAMETERS

MAIN BUILDING SPAN	6 - 30 m
KNEE (EAVE) HEIGHT	3- 6 m
BAY WIDTH	3 - 6 m
LEAN-TO SPAN	2 - 15 m

## DESIGN CONSIDERATIONS

### LOCATION

- BOUNDARY SETBACKS & FIRE ENGINEERING
- TILT PANELS

### SIZE

- SPAN
- LENGTH
- HEIGHT
- PITCH

### ACCESS

- JOINERY
- SECTIONAL & ROLLER DOORS
- OPEN BAYS

### ADDITIONALS

- CANOPIES
- VERANDAS
- LEAN-TOS
- MEZZANINES

### CLOTHING

- COLORSTEEL & TIMBER CLADDING
- ROOFING
- EYEBROWS

We can come up with a plan ourselves based on your specified dimensions and requirements, or we can reference a sketch or existing plan provided by you to ensure we're on the same page with the design.

This architectural elevation drawing shows the exterior of the building. On the left, there is a large, dark, rectangular garage door set within a light-colored, textured concrete frame. To the right of the garage door, the building transitions into a modern extension featuring large glass windows and doors, framed in dark wood or metal. A person is visible standing in one of the glass sections, providing a sense of scale. The roofline is simple, with a slight overhang over the garage area.



# 01 SHELL FEATURES

We offer a wide range of features to personalise your building. Whether you're looking to add value, style or functionality, these features will set your building apart and make it your own.



## JOINERY OPTIONS

Adding full height joinery creates a modern look while adding light and elegance to your building.



## TILT PANELS

Tilt panels offer both fire proofing as well as a unique look and feel to your building.



## MEZZANINES

Mezzanines add another level to your shed for living space or storage.



## LEAN-TOS & OPEN BAYS

Incorporating lean-tos and open bays enhances functionality by providing versatile, sheltered spaces for various activities.



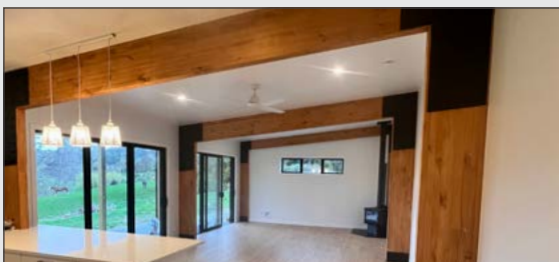
## MULTIPLE CLADDING OPTIONS

Personalise your building with multiple cladding options. From traditional shed Colorsteel, to cedar and weatherboard, make your building your own.



## CANTILEVER CANOPIES

Add protection from the weather and dimension to your building without obstructions.



## SARKED CEILINGS

Sarked ceilings add space and volume to internal spaces making them feel larger, lighter and more inviting.



## FEATURE EYEBROWS

Our unique feature eyebrow gives your building dimension and style.



02

---

# **FIT OUT**

---

The internal spaces that make up your building.

From internal walls, doors and ceilings, to finishing touches like paint, wallpaper and window treatments.

## 02 FIT OUT SPECIFICATIONS

When it comes to choosing the specifications of your internal fit out, we have a lot to offer to suit all budgets. From minimalist to luxurious, we can tailor your interior to fit your vision.



### LININGS

Walls, ceilings and architraves. Traditional Gib, stop and paint, feature timber, or wallpaper. We offer a variety of options to suit your taste.



### DOORS

Internal doors including swing doors, cavity sliders or sliding barn doors.



### CABINETRY

Kitchens and cupboard cabinetry. We have a wide range of choices to suit a variety of styles.



### ELECTRICAL & SECURITY

From light switches and power points to security cameras and alarms. We can design an electrical plan to suit your new build.



### PLUMBING

More than just pipes, we can help with tapware, shower fittings, sinks and basins. We have a range to suit all budgets.



### HVAC

Home ventilation systems including heat pumps and ducted solutions.



### FLOOR COVERINGS

From polished concrete to laminate, tile and carpet. We offer a wide range of flooring options.



### FINAL TOUCHES

Finish of your office space with custom design elements like glass partitions, or wall and ceiling finishes.

# 03

---

## BUDGET RANGE

---

There are two main factors involved in determining the price of your new building:

### 01: SCALE

The overall size of the spaces will have an effect on the cost per m<sup>2</sup>. The larger the area, the more efficient the supply of materials and construction, and therefore the lower the overall cost.

### 02: SPECIFICATIONS

We offer a wide range of products to suit every budget. From Colorsteel cladding to Red Cedar, from polished concrete flooring to industrial timber flooring. The specifications you choose affect the overall cost of your project.

## 03 BUDGET RANGE SHELL



**Whatever your Budget, we have a Product that Suits Your Needs.**

We can offer a “Shell Only” product - providing you with a weather tight, lock-up ready structure that you can fit out yourself, or we can take care of the full project for you and include a fully fitted out interior.

**See below rates for Shell Only Construction.**

### WAREHOUSE AREAS

Foundations, Steel Superstructure, Steel Girts & Purlins, Tilt Panels, Roofing & Cladding, Joinery, Roller Doors, Gutters & Flashings.

**\$800/m<sup>2</sup>**

LOW END ESTIMATE

**\$1,400/m<sup>2</sup>**

HIGH END ESTIMATE

### OFFICE AREAS

Foundations, Steel Superstructure, Timber Framing, Cavity System, Roofing & Cladding, Joinery, Roller Doors, Gutters & Flashings.

**\$1,200/m<sup>2</sup>**

LOW END ESTIMATE

**\$1,600/m<sup>2</sup>**

HIGH END ESTIMATE

### MEZZANINES

Mezzanine Structure, Flooring, Balustrades & Stairs.

**\$700/m<sup>2</sup>**

LOW END ESTIMATE

**\$1,000/m<sup>2</sup>**

HIGH END ESTIMATE

### VERANDAS AND CANOPIES

Canopy Foundations, Structure, Roofing, Guttering & Flashings.

**\$600/m<sup>2</sup>**

LOW END ESTIMATE

**\$800/m<sup>2</sup>**

HIGH END ESTIMATE

**ALL PRICES INCLUDE GST**

## 03 BUDGET RANGE FIT OUT



Below is a budget guide to fit out the interior of your shell. For warehouse areas this may be ply lining, epoxy flooring, services and electrical. Canopies & Lean-to items may include driveway concrete and external lighting, while office areas have a full suite of products and specifications to choose from. Add your shell price to your fitout price for an idea of overall cost.

Budget ranges are a guide only. We'd be more than happy to discuss your custom build in detail and put a full custom proposal together for you.

### WAREHOUSE AREAS (INCLUDE MEZZANINES)

Additional Cost to Include Internal Linings, Plumbing and Services.

**\$100/m<sup>2</sup>**

LOW END ESTIMATE

**\$200/m<sup>2</sup>**

HIGH END ESTIMATE

### OFFICE AREAS (INCLUDE MEZZANINES)

Additional cost to Include Full Interior Fit Out as per 02 FIT OUT SPECIFICATIONS.

**\$1,200/m<sup>2</sup>**

LOW END ESTIMATE

**\$1,600/m<sup>2</sup>**

HIGH END ESTIMATE

### CANOPIES & LEAN-TOS

Additional Cost to Include Driveway Concrete and Electrical Fitout.

**\$100/m<sup>2</sup>**

LOW END ESTIMATE

**\$300/m<sup>2</sup>**

HIGH END ESTIMATE

**ALL PRICES INCLUDE GST**